

IKO Crossed Roller Bearings meet the demanding equipment performance requirements for various industries.

Compact Size

Arranging the rollers orthogonally between the inner ring and the outer ring enables a complex load to be received with one bearing.

High Rigidity

The line contact structure of the rollers greatly improves rigidity compared to ball type bearings.

Usability

Mounting hole type crossed roller bearings can be easily mounted on the device without using a housing.

High Quality

Our decades of experience in roller bearing manufacturing enables us to produce consistently high quality Crossed Roller Bearings.

Variety

Crossed Roller Bearings are available in a wide variety of types to support various industries.

Flexibility

IKO's use of multi-model manufacturing enables unique flexibility and the ability to offer Crossed Roller Bearings that can be custom made based on customer usage applications.

IKO

NIPPON THOMPSON CO., LTD. (JAPAN)

Head Office : 19-19, Takanawa 2-chome, Minato-ku, Tokyo, 108-8586, Japan
Phone : +81 (0)3-3448-5850
Fax : +81 (0)3-3447-7637
E-mail : ntt@ikonet.co.jp
URL : https://www.ikonet.co.jp/
Plant : Gifu, Kamakura



IKO INTERNATIONAL, INC. (U.S.A.)

East Coast Operations (Sales Head Office)

91 Walsh Drive,
Parsippany, NJ, 07054,
U.S.A.
Phone : +1-973-402-0254
Toll Free : +1-800-922-0337
Fax : +1-973-402-0441
E-mail : eco@ikonet.co.jp



Midwest Operations

101 Mark Street, Unit-G,
Wood Dale, IL, 60191,
U.S.A.
Phone : +1-630-766-6464
Toll Free : +1-800-323-6694
Fax : +1-630-766-6869
E-mail : mwo@ikonet.co.jp

Minnesota Sales Office

1500 McAndrews Road West, Suite 210,
Burnsville, MN, 55337,
U.S.A.
Phone : +1-952-892-8415
Toll Free : +1-800-323-6694
Fax : +1-952-892-1722
E-mail : mwo@ikonet.co.jp

West Coast Operations

9830 Norwalk Boulevard, Suite 198,
Santa Fe Springs, CA, 90670,
U.S.A.
Phone : +1-562-941-1019
Toll Free : +1-800-252-3665
Fax : +1-562-941-4027
E-mail : wco@ikonet.co.jp

Silicon Valley Sales Office

1500 Wyatt Drive, Suite 10,
Santa Clara, CA, 95054,
U.S.A.
Phone : +1-408-492-0240
Toll Free : +1-800-252-3665
Fax : +1-408-492-0245
E-mail : wco@ikonet.co.jp

Southeast Operations

3235 Satellite Boulevard
Building 400, Suite 230
Duluth, GA, 30096,
U.S.A.
Phone : +1-770-418-1904
Toll Free : +1-800-874-6445
Fax : +1-770-418-9403
E-mail : seo@ikonet.co.jp

Southwest Operations

8105 N. Beltline Road, Suite 130,
Irving, TX, 75063,
U.S.A.
Phone : +1-972-929-1515
Toll Free : +1-800-295-7886
Fax : +1-972-915-0060
E-mail : swo@ikonet.co.jp

IKO THOMPSON BEARINGS CANADA, INC.(CANADA)

731-2425, Matheson Boulevard East, 7th floor,
Mississauga, Ontario, L4W 5K4, Canada
Phone : +1-905-361-2872
Fax : +1-905-361-6401
E-mail : itc@ikonet.co.jp

Recognizing that conservation of the global environment is the top-priority challenge for the world's population, Nippon Thompson will conduct its activities with consideration of the environment as a corporate social responsibility, reduce its negative impact on the environment, and help foster a rich global environment.

ISO 9001 & 14001 Quality system registration certificate



IKO BRASIL SERVIÇOS EMPRESARIAIS EIRELI (BRAZIL)

Rua Frei Caneca 1407,
Condominio Edificio Barão de Monte Cedro,
Cjs. 801/802, Consolação, São Paulo- SP
Cep : 01307-909
Phone : +55 (0)11-2366-3033
E-mail : itb@ikonet.co.jp

NIPPON THOMPSON EUROPE B.V. (EUROPE)

The Netherlands (Sales Head Office)

Keersopstraat 35,
3044 EX, Rotterdam,
The Netherlands
Phone : +31 (0)10-462 68 68
E-mail : nte@ikonet.co.jp



Germany Branch

Mündelheimer Weg 54,
40472 Düsseldorf,
Germany
Phone : +49 (0)211-41 40 61
Fax : +49 (0)211-42 76 93
E-mail : ntd@ikonet.co.jp

Regensburg Sales Office

Im Gewerbepark D 30,
93059 Regensburg,
Germany
Phone : +49 (0)941-20 60 70
Fax : +49 (0)941-20 60 719
E-mail : ntdr@iko-nt.de

Neunkirchen Sales Office

Gruben Str. 95c,
66540 Neunkirchen,
Germany
Phone : +49 (0)6821-99 98 60
Fax : +49 (0)6821-99 98 626
E-mail : ntdn@iko-nt.de

U.K. Branch

2 Vincent Avenue, Crownhill,
Milton Keynes, Bucks, MK8 0AB,
United Kingdom
Phone : +44 (0)1908-566144
Fax : +44 (0)1908-565458
E-mail : sales@iko.co.uk

Spain Branch

Autovia Madrid-Barcelona, Km. 43,700
Polig. Ind. AIDA - Nove A-8, Ofic. 2-1ª
19200-Azuqueca de Henares,
(Guadalajara) Spain
Phone : +34 949-26 33 90
Fax : +34 949-26 31 13
E-mail : nts@ikonet.co.jp

France Branch

Bâtiment le Raphaël-Paris, Nord 2,
22 avenue des Nations
BP54394 Villepinte
95943 ROISSY C.D.G Cedex
France
Phone : +33 (0)1-48 16 57 39
Fax : +33 (0)1-48 16 57 46
E-mail : ntf@ikont.eu

IKO THOMPSON ASIA CO., LTD. (THAILAND)

1-7 Zuellig House, 3rd Floor,
Silom Road, Silom, Bangrak,
Bangkok 10500, Thailand
Phone : +66 (0)2-637-5115
Fax : +66 (0)2-637-5116
E-mail : ita@ikonet.co.jp

For more information



IKO THOMPSON KOREA CO.,LTD. (KOREA)

201, Worldvision Bldg., 77-1, Yeouinaru-ro,
Yeongdeungpo-gu, Seoul, Korea
Phone : +82 (0)2-6337-5851
Fax : +82 (0)2-6337-5852
E-mail : itk@ikonet.co.jp

IKO-THOMPSON (SHANGHAI) LTD. (CHINA)

Shanghai (Sales Head Office)

1608-10, MetroPlaza No.555, LouShanGuan
Road, Changning District, Shanghai,
People's Republic of China, 200051
Phone : +86 (0)21-3250-5525
Fax : +86 (0)21-3250-5526
E-mail : ntc@ikonet.co.jp

Beijing Branch

Room1506, Jingtai Tower,
NO.24, Jianguomenwai Avenue,
Chaoyang District, Beijing
People's Republic of China, 100022
Phone : +86 (0)10-6515-7681
Fax : +86 (0)10-6515-7689
E-mail : ntc@ikonet.co.jp

Guangzhou Branch

Room 834, Garden Tower, Garden Hotel
368 Huanshi East Road, Yuexiu District, Guangzhou,
Guangdong
People's Republic of China, 510064
Phone : +86 (0)20-8384-0797
Fax : +86 (0)20-8381-2863
E-mail : ntc@ikonet.co.jp

Wuhan Branch

Room 2300, Truroll Plaza No.72, Wusheng Road,
Qiao kou District, Wuhan, Hubei,
People's Republic of China, 430033
Phone : +86 (0)27-8556-1610
Fax : +86 (0)27-8556-1630
E-mail : ntc@ikonet.co.jp

Shenzhen Branch

Room1808, KEENSTAR Building 18,
Chuangye 2nd Rd 248, Bao'an, Shenzhen, Guangdong,
People's Republic of China, 518081
Phone : +86 (0)755-2265-0653
Fax : +86 (0)755-2298-0665
E-mail : ntc@ikonet.co.jp

Ningbo Office

Room 3406, Zhongnongxin Building, No.181,
Zhongshan East Road, Haishu Ward, Ningbo,
People's Republic of China, 315000
Phone : +86 (0)574-8718-9535
Fax : +86 (0)574-8718-9533
E-mail : ntc@ikonet.co.jp

Qingdao Office

Room 1111, Building 9, Qingdao Science and
Technology City, No. 7 Wuyang Road,
North District, Qingdao City, Shandong,
People's Republic of China, 266045
Phone : +86 (0)532-8670-2246
Fax : +86 (0)532-8670-2242
E-mail : ntc@ikonet.co.jp

Shenyang Office

2-1203 Tower I, City Plaza Shenyang NO.206,
Nanjing North Street, Heping District, Shenyang,
People's Republic of China, 110001
Phone : +86 (0)24-2334-2662
Fax : +86 (0)24-2334-2442
E-mail : ntc@ikonet.co.jp

- The specifications and dimensions of products in this catalog are subject to change without prior notice.
- When these products are exported, the exporter should confirm a forwarding country and a use, and, in case of falling under the customer's requirements, take necessary procedures such as export permission application.
- Although all data in this catalog has been carefully compiled to make the information as complete as possible, NIPPON THOMPSON CO., LTD. shall not be liable for any damages whatsoever, direct or indirect, based upon any information in this catalog. NIPPON THOMPSON CO., LTD. makes no warranty, either express or implied, including the implied warranty of merchantability or fitness for a particular purpose.
- Reproduction and conversion without permission are prohibited.



IKO

Crossed Roller Bearing Solutions

NIPPON THOMPSON CO., LTD.



Crossed Roller Bearings Reliable Performance for a Wide Range of Industries.



Equipment Performance Requirements:

Miniaturization

Allowable Load

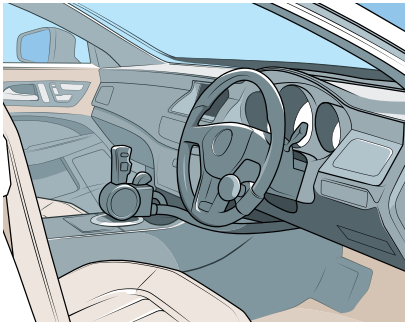
Reliability / Safety

Accurate Positioning

Automobiles & Aerospace

Manual Driving Auxiliary Device Accelerator Control Unit

Manual driving auxiliary devices require small bearings and accurate positioning for comfortable and accurate operation. Crossed Roller Bearings can meet this demand by providing a compact size, high rigidity and high accuracy.



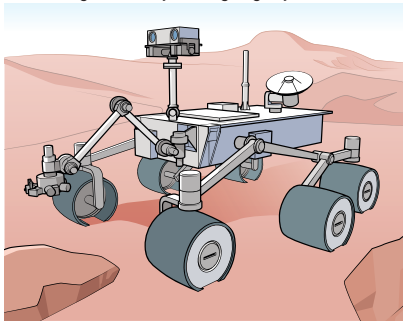
Aircraft Interior Backrest Angle Adjustment Mechanism

Aircraft seats must be durable and need to provide precise positioning, comfort and maneuverability. Crossed Roller Bearings used in the seat mechanisms can perform beyond the required high load capacity, high accuracy and high rigidity.



Planetary Probe Camera Rotating Pedestal

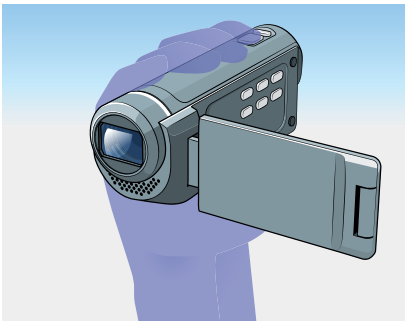
Cameras on planetary probes need to clearly capture planetary conditions. To do this, it is necessary to position the camera without blurring while withstanding vacuum and low temperature environments. Crossed Roller Bearings with special specifications proven to work in difficult environments can achieve this with high accuracy and high rigidity.



Video Equipment

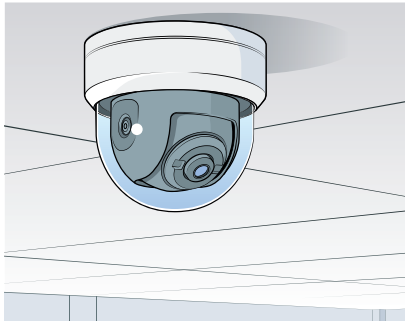
High Performance Video Cameras Camera Focus Adjustment Unit

Video cameras are lightweight and require accurate focus positioning to produce clear images. Crossed Roller Bearings are ideal for this situation due to their compact size, high rigidity and high accuracy.



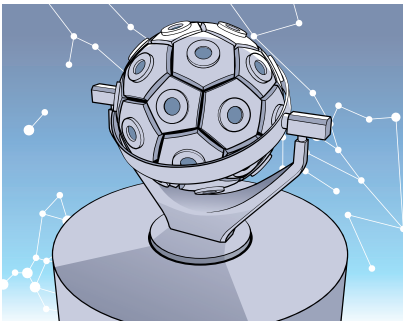
Surveillance Cameras Camera Swivel Axis

Surveillance cameras need to not only be compact, but also be durable enough to keep moving in any situation. Crossed Roller Bearings can meet these challenges with a compact size and high load capacity.



Planetarium Projectors Rotating Pedestal

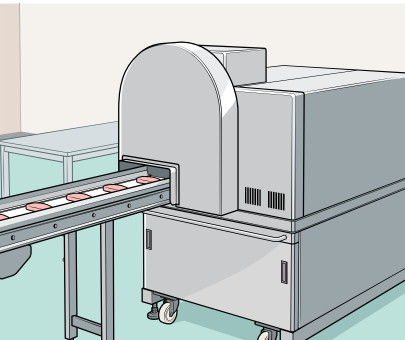
Planetarium projectors are used to project a perfect night sky onto a space above. Accurate positioning and high durability are required to support the huge projectors used. Crossed Roller Bearings can support this equipment with high accuracy, high rigidity and high load capacity.



Food Machinery

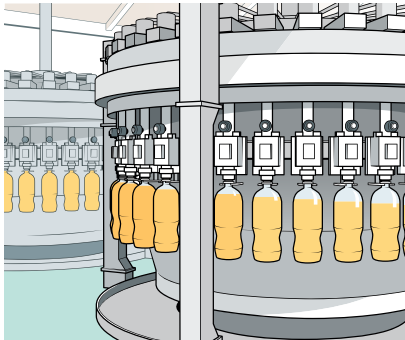
Food Slicers Cutter Spindle

Food slicers are used to cut various foods accurately and neatly, thus requiring stable positioning and durability so they do not break, even under high loads. Crossed Roller Bearings provide high accuracy, high rigidity and high load capacity for food slicers.



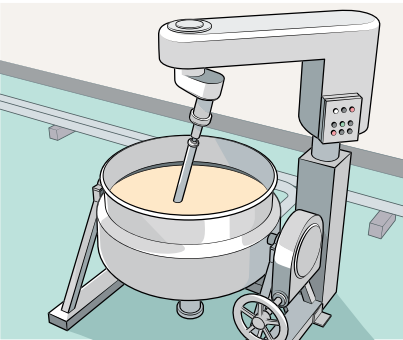
Bottling Systems Spindle Rotating Parts

Bottling systems require accurate and quick positioning of a large number of PET bottles. Crossed Roller Bearings can handle this requirement with high accuracy and high rigidity.



Food Ingredient Mixers Mixing Spindle

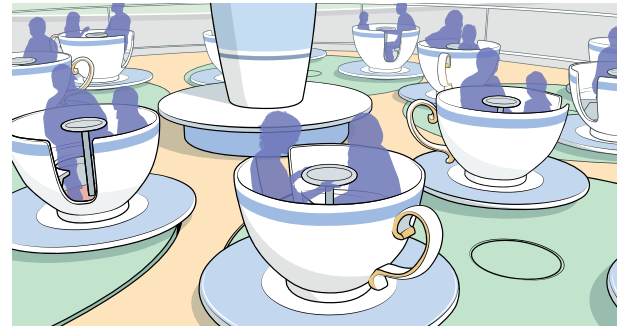
Food ingredient mixers need to withstand the large resistance that occurs during mixing, while avoiding the risk of contamination if grease from the bearings somehow gets in the mixture. Crossed Roller Bearings from IKO that use food processing machine grease are safe to use and provide high load capacity.



Entertainment

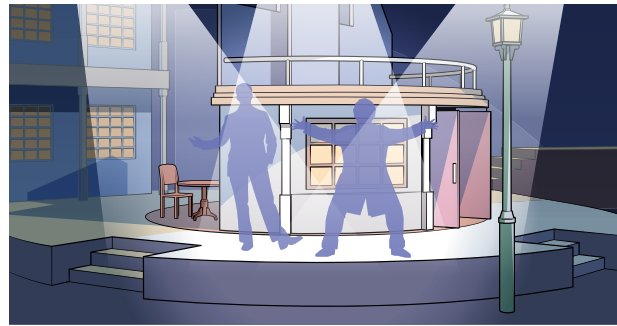
Theme Parks Tea Cup Ride Swivel Parts

Theme park tea cup rides require durability and must not have any play in their positioning to ensure safety and comfort. Crossed Roller Bearings can provide this with high rigidity, high load capacity and high accuracy.

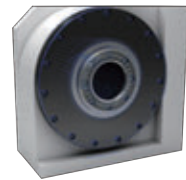


Stages Turntable Swivel Parts

The turning mechanism of a stage must support large sets and performers, making it necessary to consider both safety and durability. Moreover, it is necessary to have a natural turning motion to keep the audience and performers comfortable. Crossed Roller Bearings can handle this situation with high rigidity, high load capacity and high accuracy.



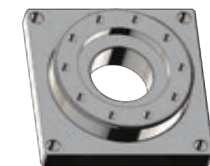
Application Examples



Special Products

IKO's multi-model production approach provides unique flexibility enabling Crossed Roller Bearings to be customized based on a customers individual specification and usage application.

IKO has a solid record of producing a wide variety of special products with different shapes, sizes, surface treatments etc., that are not available with standard products. Contact IKO if you have a special application that stock products can't accommodate.



Outer Ring Flange
Type Specification



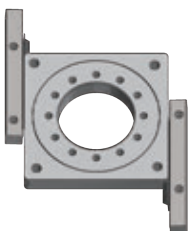
Inner Ring Stepped
Type Specification



Inner Ring Mounting Hole
Special Specification



Special Surface
Treatment Specification



Linear Motion Rolling Guide
Integrated Specification